

HiSpace, Industrial Lighting

- High performance design with Nichia SMD
- Luminous flux up to 18,000lm (150W)
- Efficacy up to 120lm/W
- Electrical: 100-240Vac/100-277Vac, 50/60Hz, PF≥0.93
- LED Lifespan > 50,000 hours (Ta=30°C@L70)
- Energy saving up to 90%
- CCT: 5000K (4000K & 3000K available to special order)
- CRI > Ra70 (CRI > Ra80 optional)
- Beam angle: 60°, 90°, 40°x130°
- Superior uniformity
- Superior temperature stability
- Temperature tested at toughest conditions
- Meanwell driver
- No external reflectors required
- PC cover: Safe for industrial applications
- Operating range: -30~+50°C
- Body: Aluminum alloy
- Stainless steel screws
- IP20 protection rating
- 5 years warranty



HiSpace Product Range

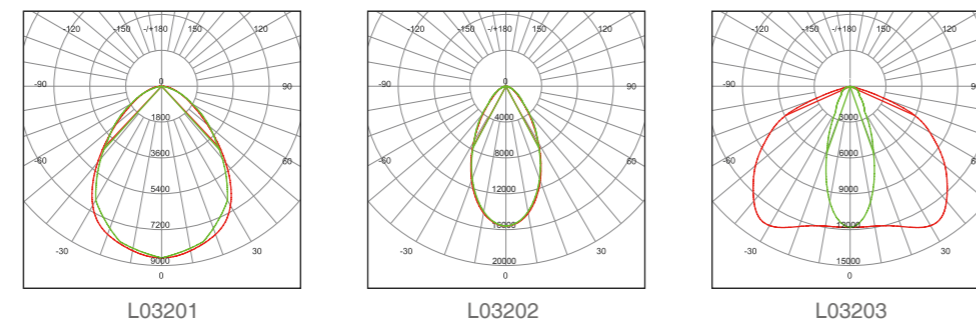
Part Number	LHB02-060	LHB02-090	LHB02-120	LHB02-150
Lumen Output	6,900lm	10,800lm	14,400lm	18,000lm
Wattage	60W	90W	120W	150W
Luminous Efficacy	115lm/W	120lm/W	120lm/W	120lm/W
CCT	3000K, 4000K, 5000K			
CRI	>Ra70, >Ra80			
Beam Angle	60°, 90°, 40°x130°			
Input Voltage	100-240Vac/100-277Vac 50-60Hz PF ≥ 0.93			
IP Rating	IP20			
LED Driver	Meanwell			
HID Equivalent	150W	250W	250W-400W	400W-600W
Certification	CE, SAA, RoHS			

Control Options

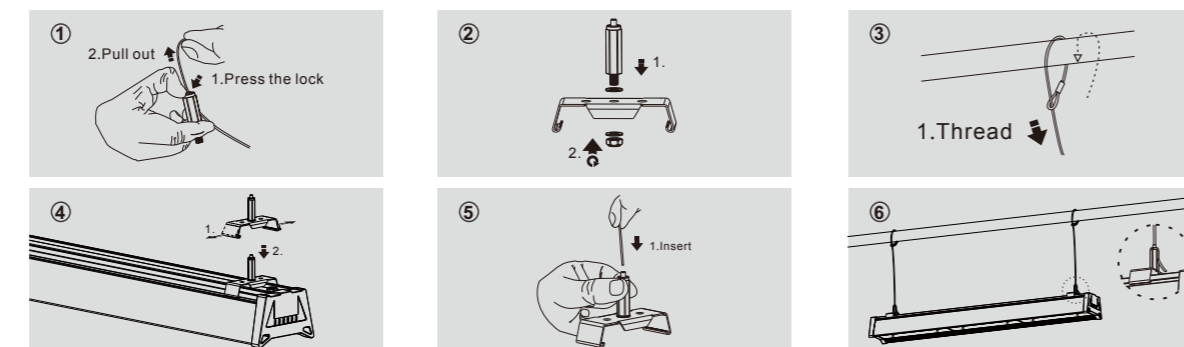
Add to the product part numbers to include these control options

Occupancy Control	DALI Control	1-10V Dimming Control	Zigbee Wireless Control	Daylight Sensor Control
-------------------	--------------	-----------------------	-------------------------	-------------------------

Photometric Diagrams



Mounting Options



V2.1 Address: Building A, Jian'an Road No.3, Fuyong, Bao'an District, Shenzhen, China.
Tel: +86-755-33581001 / 33581006 Fax: +86-755-33580559 E-mail: info@agcled.com Website: www.agcled.com



HiSpace

Ideal Lighting Solution for Warehouse



ISO9001: 2008

All info here ONLY for reference, please confirm with our sales before order.



HiSpace, New Breakthrough in Industrial Lighting

HiSpace is a newly developed industrial fixture aimed at providing better lighting solution for more industrial space. According to the experience accumulated in our so many worldwide successful warehouse projects, this light uses 4000k Ra 80 led and lens with special designed beam angle so as to focus on solving glare problem and providing more safe light for warehouse lifter.



3 different beam angle, more than warehouse lighting

3 different beam angle enables this light to be suitable for more industrial

Easy installation

Special designed bracket for hanging ensures easy installation of this light so as to save more labor cost and enhance more work efficiency.

More smart option

Compatible with different intelligent control including Dali, occupancy sensor, zigbee wireless control. As smart as possible is hi-space's commitment.

High performance

It also has the high performance, energy efficiency, and low maintenance, long life features which are required in all types of industrial lighting.



Made for industrial lighting

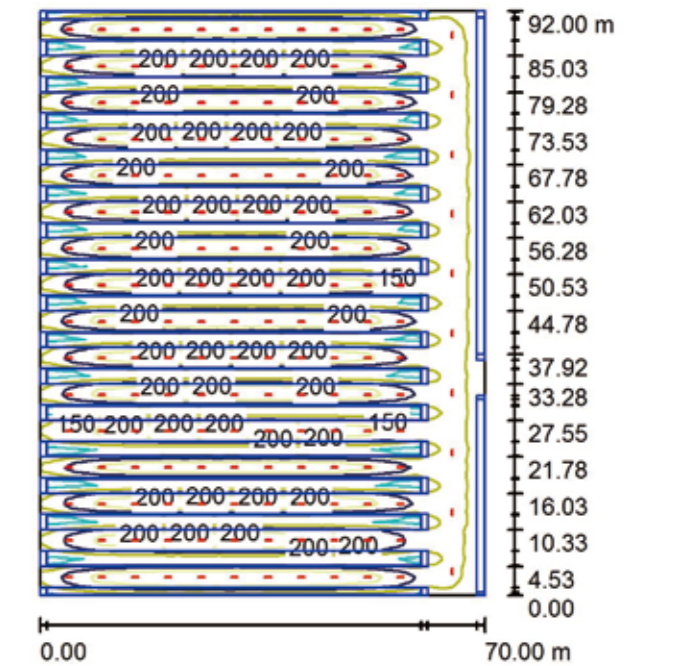
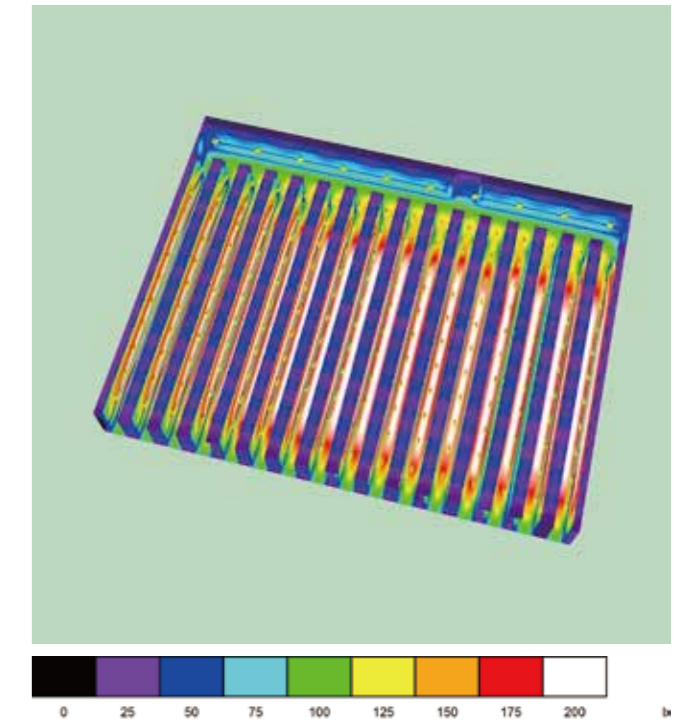
The HiSpace high bay is suitable for warehouse, gymnasium, manufacturing plant, airport, etc.



HiSpace

Dialux Simulation

Warehouse aisle



LHB02-90 L03203 5000K Ra70
LHB02-90 L03201 5000K Ra70