

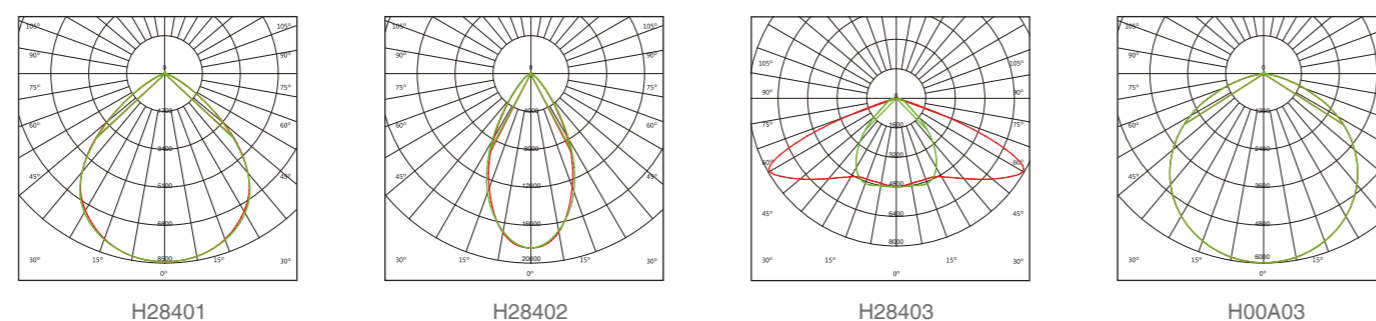
HiSky

- High performance design with Nichia SMD
- Luminous flux up to 21,000lm (150W)
- Efficacy up to 140lm/W
- Electrical: 100-240Vac/100-277Vac, 50/60Hz, PF ≥ 0.93
- LED Lifespan > 50,000 hours (Ta=30°C@L70)
- Energy saving up to 90%
- CCT : 5000K (4000K & 3000K available to special order)
- CRI > Ra70 (CRI>Ra80 optional)
- Beam angle : 60°, 90°, 120° and 90°x140° optional.
- Superior uniformity
- Superior temperature stability
- Temperature test at toughest conditions
- Meanwell driver
- No external reflectors required
- PC cover : Safe for industrial applications
- Operating temp: -30~+50°C
- Body: Aluminum alloy
- Stainless steel screws
- IP65 protection rating
- 5 years warranty

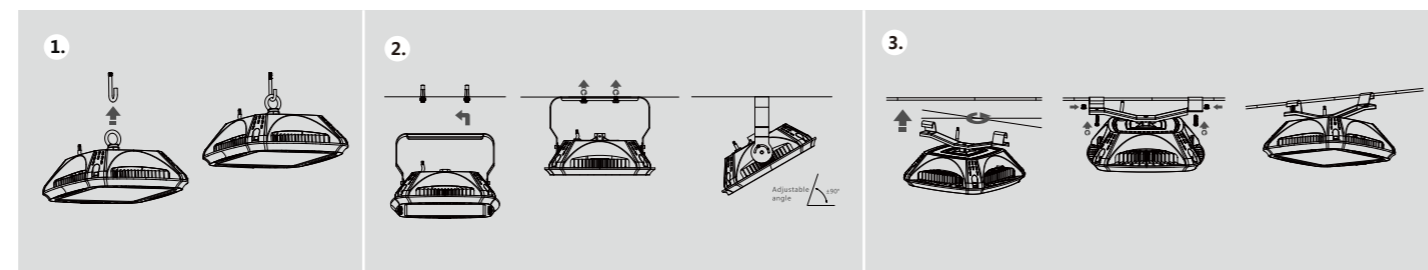
HiSky Product Range

Part Number	HB02-100	HB02-120	HB02-150
Lumen Output	14,000lm	16,800lm	21,000lm
Wattage	100W	120W	150W
Luminous Efficacy	140lm/W	140lm/W	140lm/W
CCT	3000K, 4000K, 5000K		
CRI	>Ra70, >Ra80		
Beam Angle	60°, 90°, 120°, 90°x140°		
Input Voltage	100-240Vac/100-277Vac 50-60Hz PF ≥ 0.93		
IP Rating	IP65		
LED Driver	MeanWell		
HID Equivalent	240W	400W-600W	800W
Certification	CE, SAA, RoHS		

Photometric Diagrams

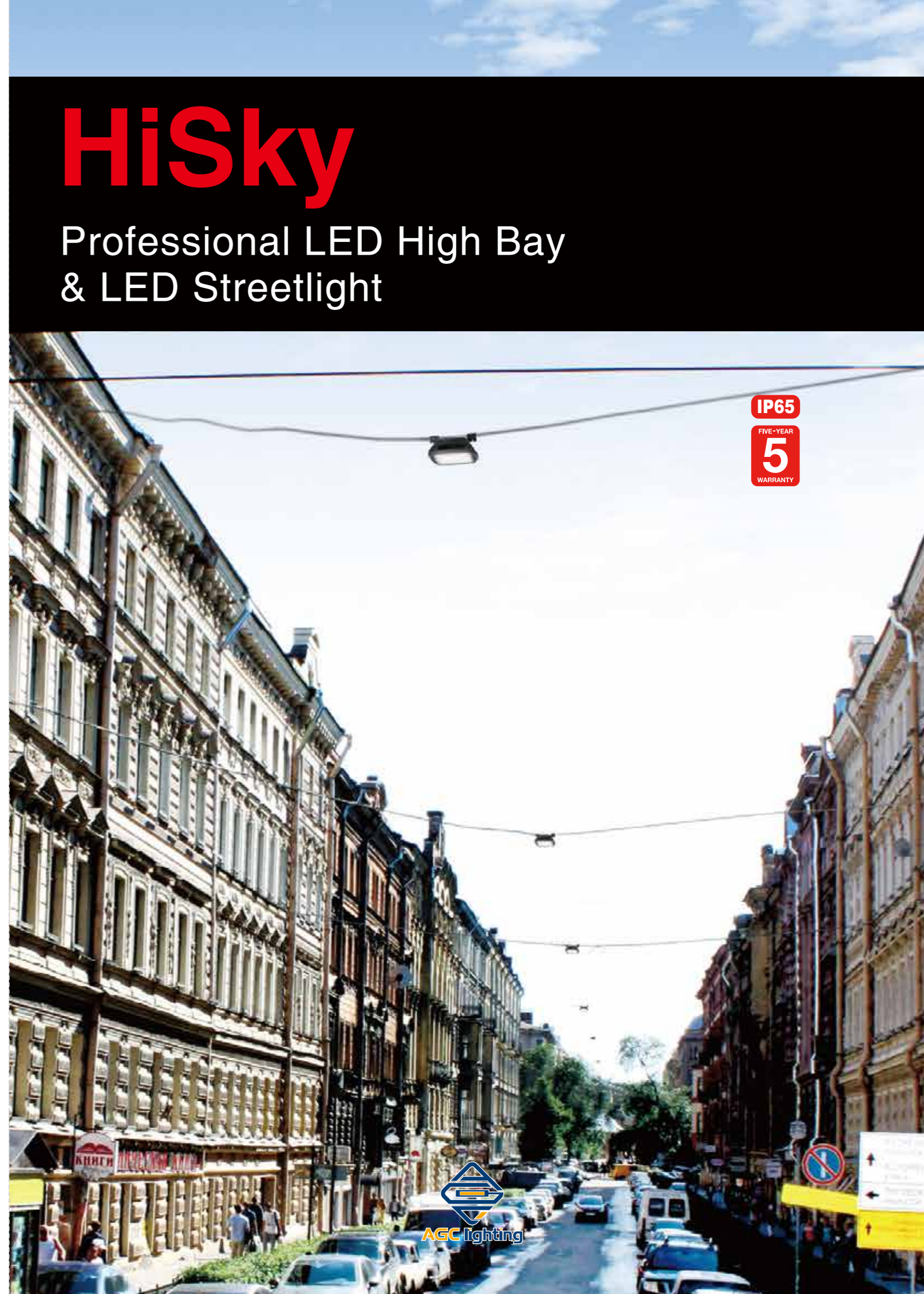


Mounting Options



HiSky

Professional LED High Bay & LED Streetlight



HiSky, the High Efficiency LED High Bay & Streetlight Over the Middle of the Road.

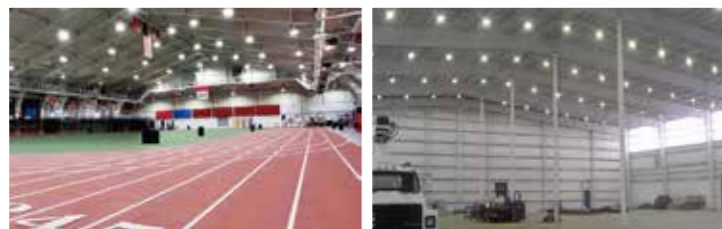


HiSky LED High Bay & LED Streetlight

HiSky is up to 140 lm/w with 4 beam angle available: 60°, 90°, 120°, 90°x140°.

Installation Ways

Hook Mounting Rotatable Bracket Mounting(±90°) Rope Installation.



Rectangular Lighting Pattern

Every product is innovated with special purposes. To meet lighting demand of narrow street environment, we design a lens that could produce rectangular lighting pattern.

It is suitable to be used in the middle of the narrow street, since rectangular lighting distribution can reduce dark spot between two fixtures, make full use of light and have better lighting uniformity for the lighting environment.

Mounting as Streetlight

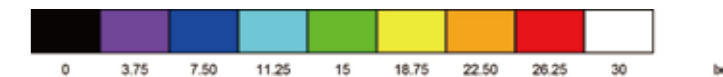
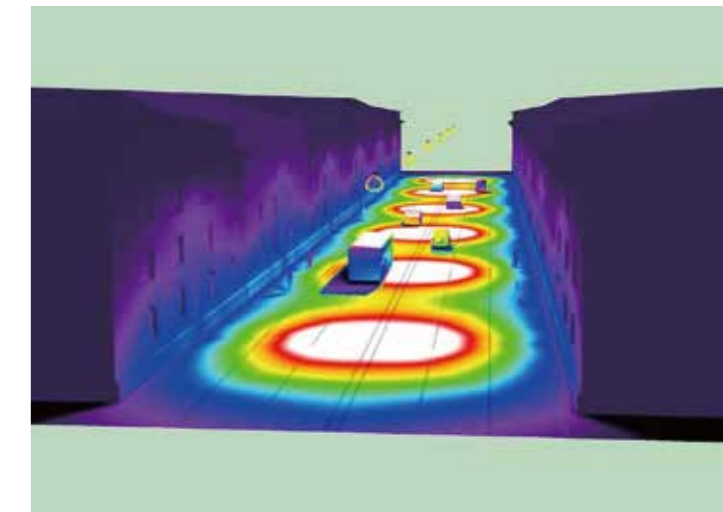
HiSky is light in weight and small in size. With special-designed bracket, it can be easily and firmly installed on wire rope crossing roadway, and be perfectly integrated with surrounding environment. It is born for narrow street application.



HiSky

Dialux Simulation

Street Lighting



HB02-150 H28403 5000K Ra70

Calculation Field List

Roadway 1

Length: 30.000 m, Width: 7.000 m

Grid: 10 x 6 Points

Accompanying Street Elements: Roadway 1.

tarmac: R2, q0: 0.070

Selected Lighting Class: ME2

(All lighting performance requirements are met.)

	L_{av} [cd/m ²]	U0	UI	TI [%]	SR
Calculated values:	1.52	0.56	0.83	5	0.79
Required values according to class:	≥ 1.50	≥ 0.40	≥ 0.70	≤ 10	≥ 0.50
Fulfilled/Not fulfilled:	√	√	√	√	√